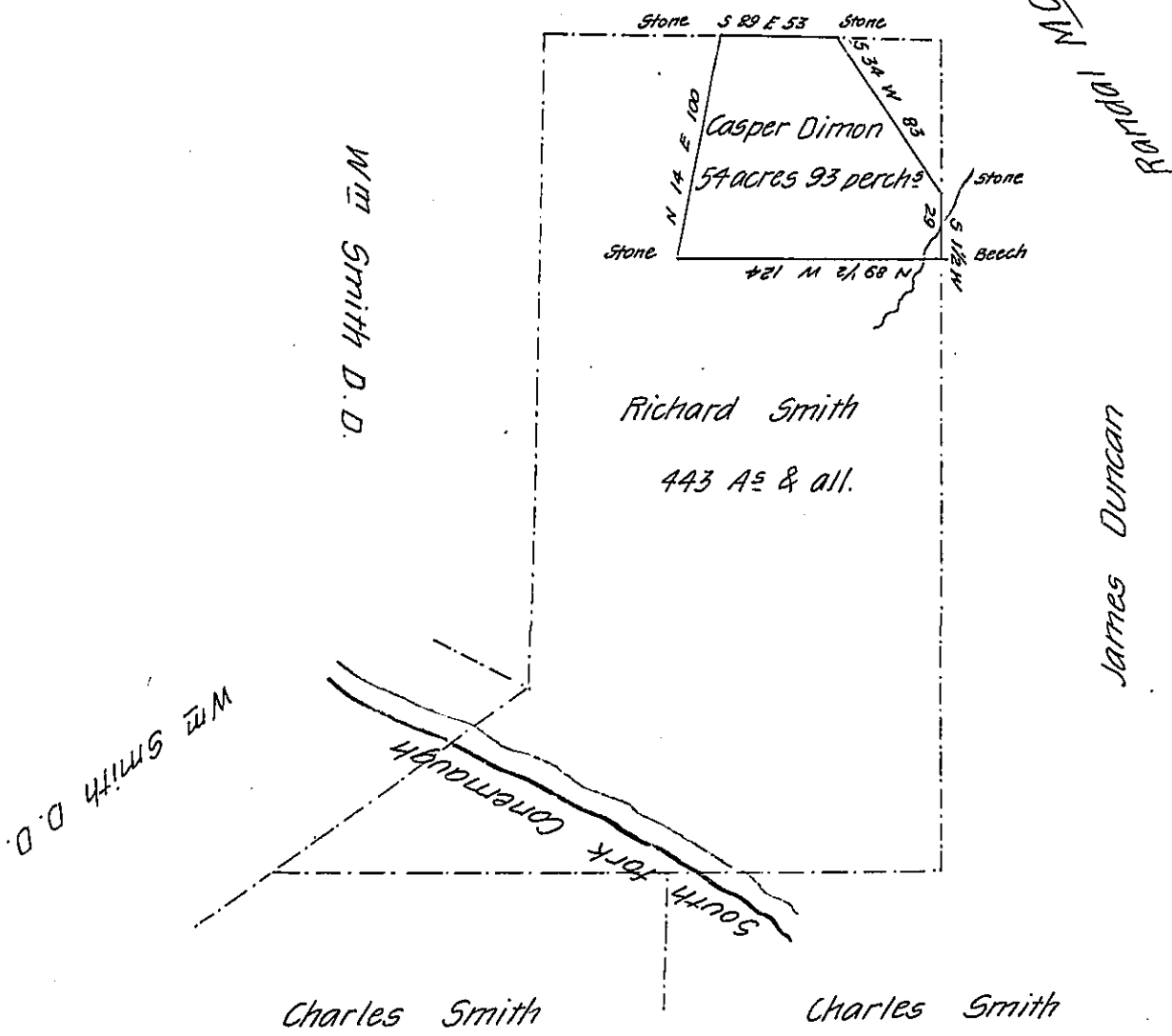


FORM NO. 1.

Robert Erwin  
Peter Mc Larran



Draft of a tract of land situate in Croyle Township County of Cambria containing fifty four acres ninety three perches & allowance of six per cent for roads &c. Surveyed for Casper Dimon th- 17<sup>th</sup> of October A.D. 1870 being part of a larger tract of 443 acres & allowance Originally surveyed in pursuance of a warrant granted to Richard Smith December-1792

Henry Scanlan-

To J. M. Campbell Esquire  
Surveyor General.

IN TESTIMONY that the above is a copy of the original remaining on file in the Department of Internal Affairs of Pennsylvania, made conformably to an Act of Assembly approved the 16th day of February 1833, I have hereunto set my hand and caused the Seal of said Department to be affixed at Harrisburg, this twelfth day of April 1907

*Geo. D. Brown*  
Secretary of Internal Affairs.